

Workie Talkie

- user guide -

Authors: Marjan Hrzic
Vedrana Gajic

Overview

[What is Workie Talkie?](#)

[Links](#)

[How to install?](#)

[How to use WorkieTalkie Plugin](#)

[Bug Tracking](#)

What is Workie Talkie?

Workie Talkie is NetBeans Jabber (gTalk, Yahoo...) plug-in for NetBeans Environment. Our main goal is to free developers from huge “*Alt+Tab*” pain, which is often present when they are working in NetBeans and on the other side, they are chatting via Gmail or other client.

With Workie Talkie plugin, we can all code and chat (for now on only with your gTalk friends) at the same time.

Based on Smack API, it offers basic tool for chat inside of NetBeans IDE.

Workie Talkie is project of NBUGS (NetBeans User Group Serbia) and is released on Apache Open Source Licence.

Links

Home page of NBUGS:

<http://www.netbeans-serbia.org>

Home page of Workie Talkie Project:

<http://workietalkie.sourceforge.net>

Download Workie Talkie Project:

<https://sourceforge.net/projects/workietalkie/files/latest/download>

How to install?

Installation of WorkieTalkie plug-in is very simple. It contains a few steps only.

Step 1:

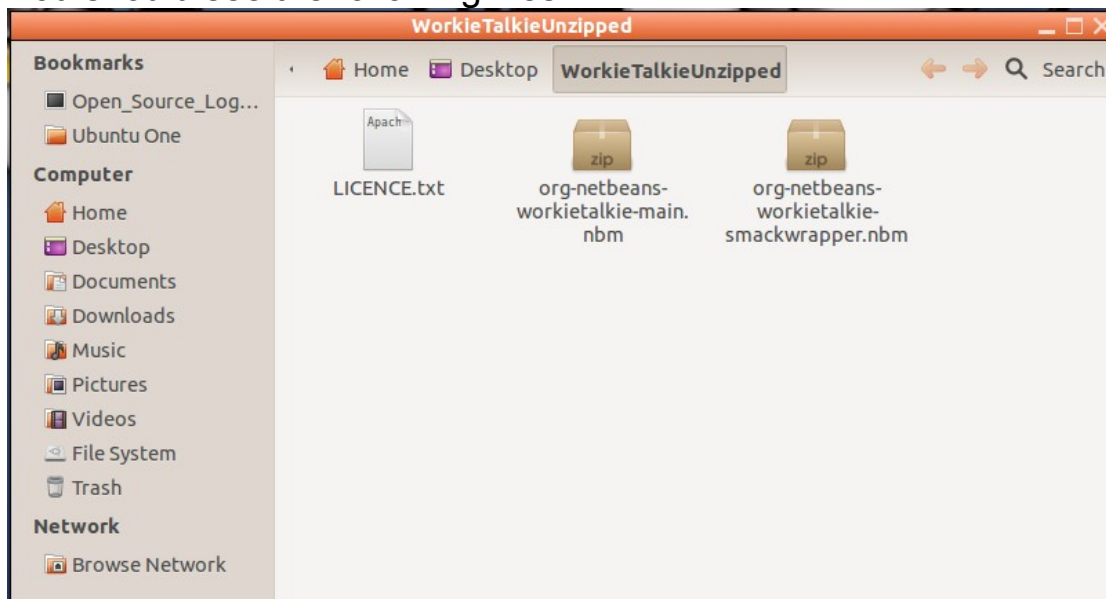
Download WorkieTalkie.zip from:

<https://sourceforge.net/projects/workietalkie/files/latest/download>

Step 2:

Unzip it.

You should see the following files:



Contents:

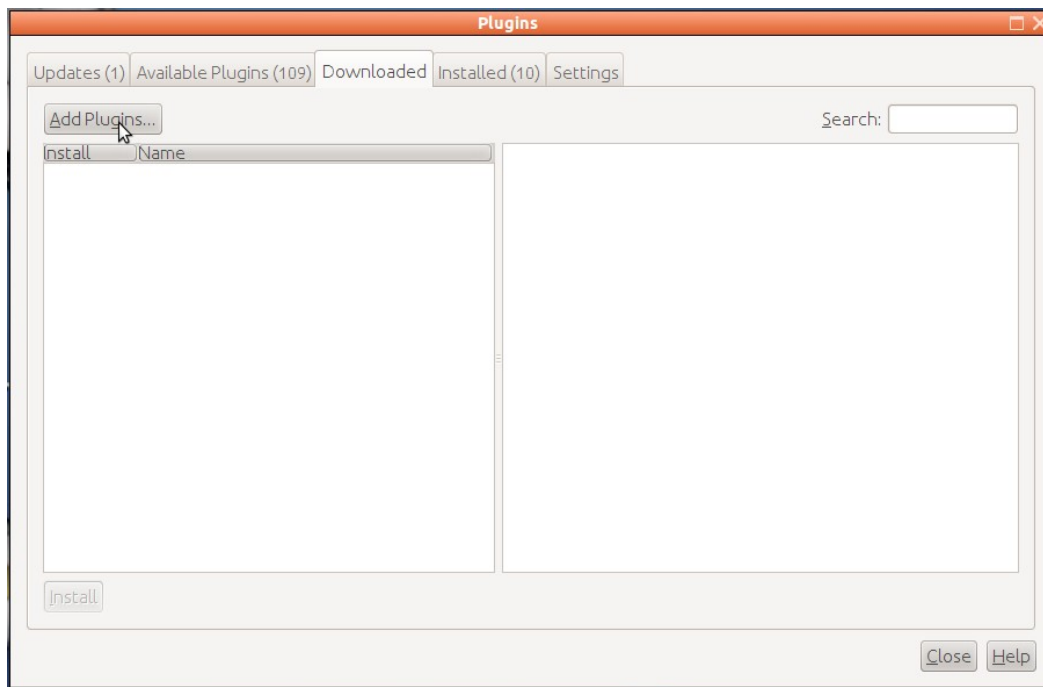
- **Licence** - Apache 2.0 Licence (You should read this.)
- **Workie Talkie Main** (Plug in)
- **Workie Talkie Wrapper** (Plug in - Wrapper Module)

Step 3: Launch your favorite IDE

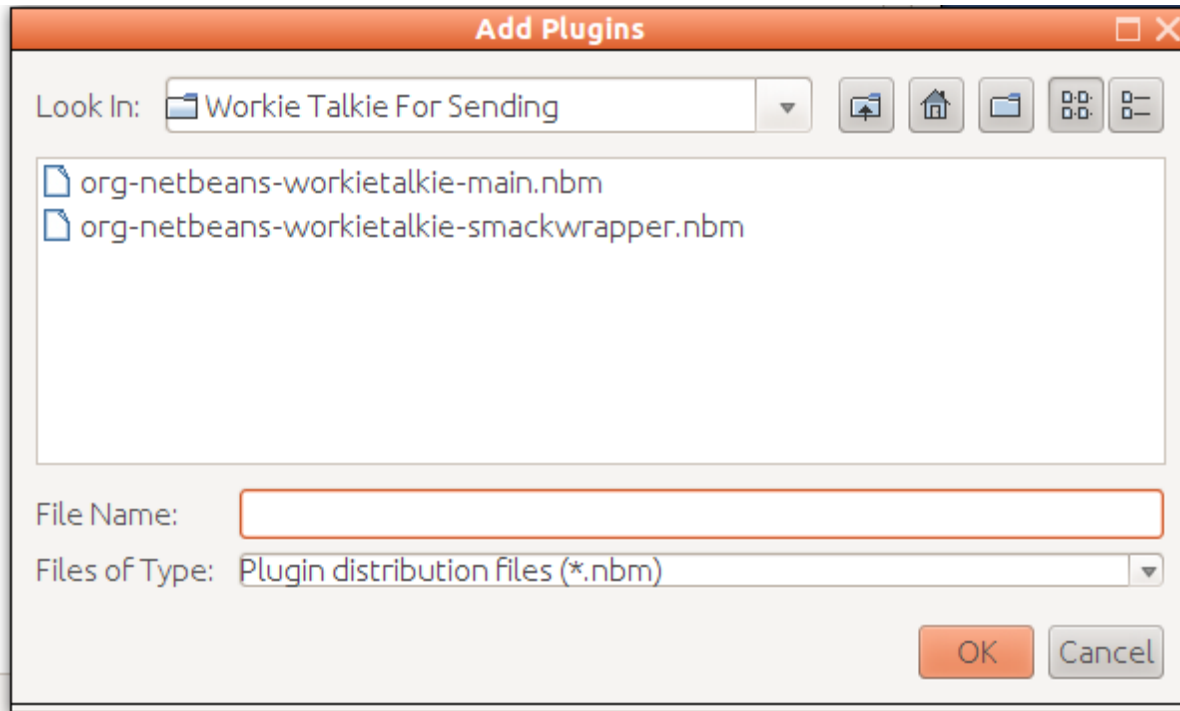
Open your *NetBeans IDE*.

Go to **Tools > Plugins**.

Navigate to **Downloaded** Tab



Click on **Add Plugins**.



And select both plug-ins.

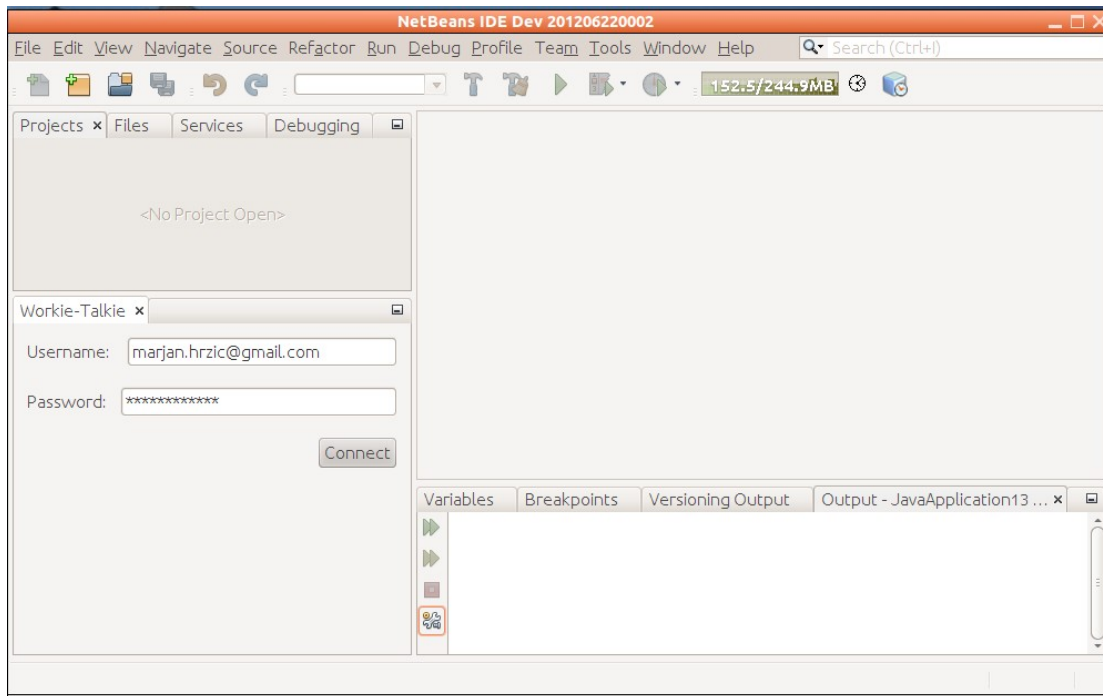
Now, you will see ***Install*** Button at the left bottom corner. Press it, and follow the instructions.

You are ready to chat! :)

How to use WorkieTalkie Plugin

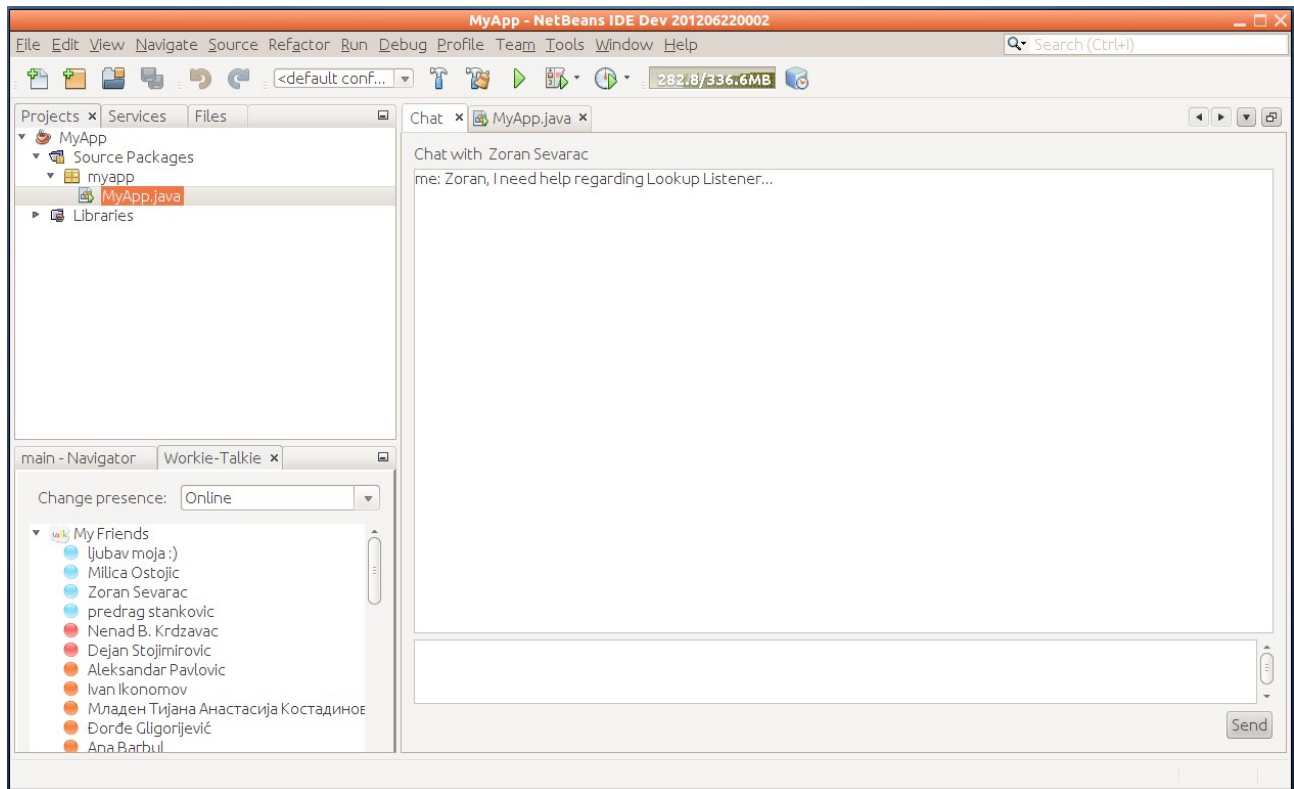
When you open Workie Talkie Window (*Window/Workie Talkie*), you need to enter login information in format. yourusername@gmail.com and your password.

Example:



After that, press connect button.

Then, the logged in screen appears.



Workie Talkie will listen for incoming chats, and open new window when it notice that someone is sending you a message. You can also start a conversation by double-clicking the contact name is Node View.

Bug Tracking

Workie talkie is open source project, and for now there are small number of developers working on it. We would be thankful if you could point us on eventually some bug that you came across using this plug in, so we can fix it, and reship plug in.

You can report bugs and all other awkward details you came across at following email:

workietalkieproject@gmail.com

Our Google group is:

wtprojectsupport@googlegroups.com